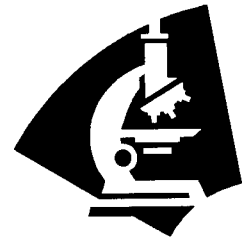


# THE NANOGRAM

Martha Jefferson Hospital Laboratory Services



Fall 2013



## Important Phone Numbers

**Clinical Lab**  
654-7170 or  
fax 654-7164

**Anatomic Pathology  
Lab**  
654-7955 or  
fax 654-7944

**AP Client Services  
Representative,  
Noel Jorgensen**  
654-5525

## Referenced Results on MJH Cytology CTGC Qiagen Specimens

As of August 7th, any "Referenced" results on Cytology CTGC Qiagen assay will reflex to MJH Microbiology (instead of going to Quest). This is a direct result of new technology in the lab to run CTGC testing via the GeneXpert.

## CHEMISTRY: CRP vs. hsCRP

## Quarterly Newsletter on Website

This newsletter is from the Laboratory and will be distributed on a quarterly basis. It contains important information and news briefs concerning laboratory services. In addition to normal distribution, each issue will be posted at [www.cvillepathology.net](http://www.cvillepathology.net) under the News Brief section.

## Hematology Analyzers

In April of this year, the Hematology Department went live with the Sysmex XN-2000 analyzers in the main Lab and the XN-1000 at the FSED Lab. After many years of using Beckman-Coulter analyzers, the switch was made to Sysmex America analyzers, which has also allowed us to standardize with the rest of the Sentara facilities.

The XN series analyzers were recently FDA approved in the fall 2012 and were launched here at MJH as one of the first hospital sites on the East Coast. The enhanced flagging abilities have resulted in less manual intervention which has the benefit of greater efficiency and improved turn around times. A few new parameters have also been introduced.

The IPF (Immature Platelet Fraction) utilizes fluorescent flow cytometry to quantify platelet production which may assist the physician in making a differential diagnosis of newly discovered thrombocytopenias. This test is automatically reflexed on platelet counts <100,000. An increased IPF is usually seen in the peripheral blood destruction or consumption whereas a decreased IPF is seen in a decreased production in the bone marrow.

The Ret-He (Reticulocyte Hemoglobin) also utilizes fluorescent flow cytometry and is a direct cellular measurement of iron availability in the bone marrow which may be used as an improved screening test of anemia, especially iron deficiency. A decreased Ret-He may indicate that there is not enough iron available in the bone marrow to keep up with RBC production. Both of these parameters may also be a good predictive indicator of platelet and red cell recovery which may also have a positive impact on platelet and blood transfusion rates. If you have any questions, please feel free to call Hematology at MJH Lab Services at 434-654-7170.

# NEW

## Chlamydia (CT) and Gonorrhea (NG) by PCR

Effective Monday, August 12, MJ Microbiology Lab switched to PCR testing for all Chlamydia trachomatis and Neisseria gonorrhoea (CT/NG) requests. Testing is performed daily.

For optimal results the following standards for specimen collection and testing will apply.

- ◆ Urine specimens: Patients should not have urinated for at least one hour before specimen collection. Female patients should not cleanse the labial area before providing the specimen.
- ◆ Vaginal/Cervical/Endocervical specimens: Areas should be cleansed of blood, mucous, and lubricant prior to collection as the aforementioned may cause testing interference.
- ◆ For Vaginal/Cervical/Endocervical collections, if any swab other than the provided swab is submitted, testing will be cancelled.
- ◆ GeneXpert CT/NG/PCR testing has not been approved for patients less than 14 years of age. Continued use of the APTIMA Combo 2 Assay Unisex or APTIMA Vaginal swabs are the recommended collections for that age group.

Results for CT/NG will be reported as Chlamydia trachomatis DNA and Neisseria gonorrhoea DNA under PCR Testing in Results Review and in Quick View of Powerchart.

To streamline the ordering process for collection kits, offices should complete a MJH Request for Lab Supply Form (indicating the number of kits needed) and send the form via lab courier. Please return the remainder of any APTIMA Combo 2 Assay Unisex or APTIMA Vaginal kits back to the lab unless your practice serves patients under the age of 14. If you have any questions and/or issues with this change, do not hesitate to contact the lab at 434-654-7170 or 434-654-7172.

For clarification, CRP is used to evaluate general inflammation and hsCRP is used to assess the risk of cardiovascular disease. Both CRP and hsCRP are reported in mg/L.

# THE NANOGRAM

Martha Jefferson Hospital Laboratory Services



Fall 2013



## Lab Leaders

**Jeff Willy, MBA, MT (ASCP)**  
Director, Lab Services

**Carolyn Dotson, MT (ASCP)**  
Lab Operations Manager

**Thea Alterman, MT (ASCP)**  
QC/QA Manager

**Bette Webber, MT (ASCP)**  
Lab Administrative Manager

**Sarah Harris, MSHS, MLT (ASCP)**  
Client Services Manager

## Pathologists

**R. Hunt MacMillan III, MD**  
Director of Chemistry and Microbiology

**Thomas Dudley, MD**  
Director of Histology and Blood Bank

**Laura Spinelli, MD**  
Medical Director, Lab Director of Cytology, Hematology, Serology, Coagulation, and Urinalysis

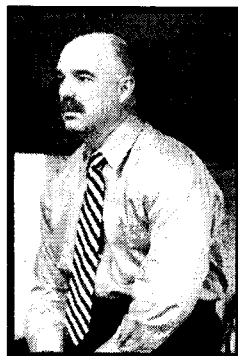
MJH Histology is now doing **P16** staining in-house. Histology is working to bring in additional stains in the future.

### Director of Clinical Lab Services Retires and Passes Leadership to New Director

Nancy Lewis, MT (ASCP) retired after 41 years of services at Martha Jefferson Hospital. Nancy came to MJH in 1972 as a MT (Medical Technologist) joining the lab staff that consisted of 13 members. In 1983, she was promoted to Lab Director which she continued in this position for the next 30 years. During her career, Nancy has seen the lab grow in many ways including the establishment of the AP department in 1976, the creation of the reference lab business in 1986, total

computerization of the lab in 1986 with Sunquest, the addition of our Cytology lab in 1995, and finally a successful move to our new laboratory in 2011. Nancy has

served on the Virginia Society for Clinical Lab Science Board in many capacities over the years, including president. The staff and many friends bid Nancy farewell during both the MJH Employee Service Award Luncheon and a retirement party. As one of the great steps in her leadership plan, Nancy created a very responsible succession plan and has over the years been mentoring Jeff Willy, MBA, MT (ASCP) to step into the Director's position upon her retirement. Thanks to Nancy for her great service. And, welcome to Jeff in his new position.



### **H** **i** **s** **t** **o** **l** **o** **g** **y** **U** **p** **d** **a** **t** **e** **s**

#### Histology: Slides for Review from Outside Institution

Please note the key points for slides coming to MJH from an outside facility.

1. The office must request the slides to be sent to MJH Anatomic Pathology (AP) Dept.
2. A Surgical Path request with billing info should be sent to AP lab *PRIOR* to slide arrival.
3. Please fax to 434-654-7776.
4. All reviewed slides are held for one month after case has been signed out by our pathologists.

#### Histology: Surgical Pathology Add-On Form

The Histology Department has issued a new *Add-On Test Request Form* to be used when a Healthcare Providers are adding on tests to an archived Histology case/specimen. The form should be sent to Histology and accompanied by patient demographic and current insurance information. To get the new form, call Histology at 434-654-7188.

#### REMINDER: Outpatient Collection Areas

There are two Outpatient Collection Centers that offer the following services: Phlebotomy, EKG, urine collections for urinalysis, culture and drug screen, and specimen drop. Please make note of hours below.

**Outpatient Care Center Pantops**  
595 Martha Jefferson Drive  
Charlottesville, VA 22911  
(434) 654-8890 Lab  
(434) 654-8581 Fax  
(434) 654-8801 Registration

Hours: Mon—Fri: **7am to 5pm**

**Proffit Road Outpatient Collection Center**  
3263 Proffit Road  
Charlottesville, VA 22911  
(434) 654-4621 Lab  
(434) 975-2479 Fax  
(434) 654-4650 Registration

Hours: Mon—Fri: **8am to 4pm**